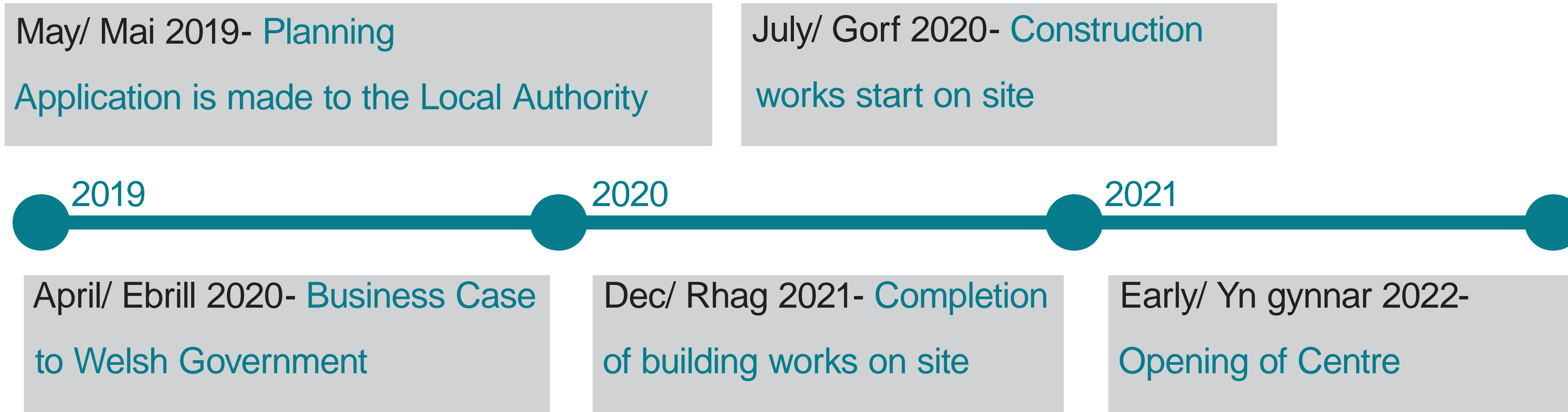




Key Project Dates / dydiadau allweddol y prosiect

Project Timeline / Amserlen y Prosiect



Key Project Information/ gwybodaeth allweddol y prosiect

Project Brief and Facilities/ gwybodaeth allweddol y prosiect

Aneurin Bevan University Health Board are planning to build a new integrated Health and Wellbeing Centre in Tredegear, on the site of the former General Hospital on Park Row. The purpose of the centre is twofold:

To ensure healthcare services are provided from high quality, fit for purpose buildings and to bring healthcare professionals, third sector partners and other providers under one roof to ensure a coordinated approach to health and wellbeing.

Sicrhau y darperir gwasanaethau gofal iechyd o adeiladau o safon uchel ad addas i'w diben a dod â gweithwyr gofal iechyd proffesiynol, partneriaid trydydd sector a darparwyr eraill ynghyd o dan yr un to i sicrhau dull o weithredu cydgysylltiedig ar gyfer iechyd a lles.

The centre will have a focus on 'Pharmacy First' to help reduce demand on GP and clinical services.

Subject to planning and Welsh Government approval, the centre will open in early 2022.

Together with Blaenau Gwent County Borough Council and our third sector partners, the Health and Wellbeing Centre will form part of a vibrant community hub which will be available to all residents in Tredegear.

It will include:/ Bydd yn cynnwys:

Your GP/ Eich Meddyg Teulu



Your Dentist/ Eich Deintydd



Community Pharmacy/ Fferyllfa Gymunedol



Sexual Health Services/ Gwasanaethau Iechyd Rhywiol



Dieticians/ Deietegwyr



Speech and Language Therapy/ Therapi lleferydd ac laith



Podiatrist (Feet)/ Podiatrydd (Traed)



Audiology (Hearing)/ Awdiolog (Clyw)



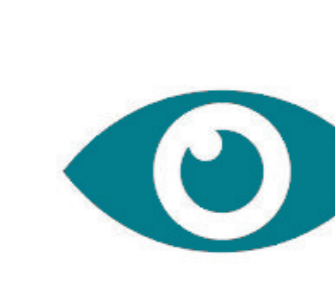
Direct Access Physiotherapy/ Ffisiotherapi Mynediad Uniongyrchol



Wellbeing Support/ Cymorth Lles



Diabetic Eye Screening/ Sgrinio Llygaid Diabetig



Learning Disability Services/ Gwasanaethau Anabledd Dysgu



Memory Assessment Services/ Gwasanaethau Asesu'r Cof



Citizens Advice/ Cyngor ar Bopeth



Flying Start/ Dechrau'n Deg



Space for recreation & leisure/ Mannau hamdden



AAA Screening/ Sgrinio YAA

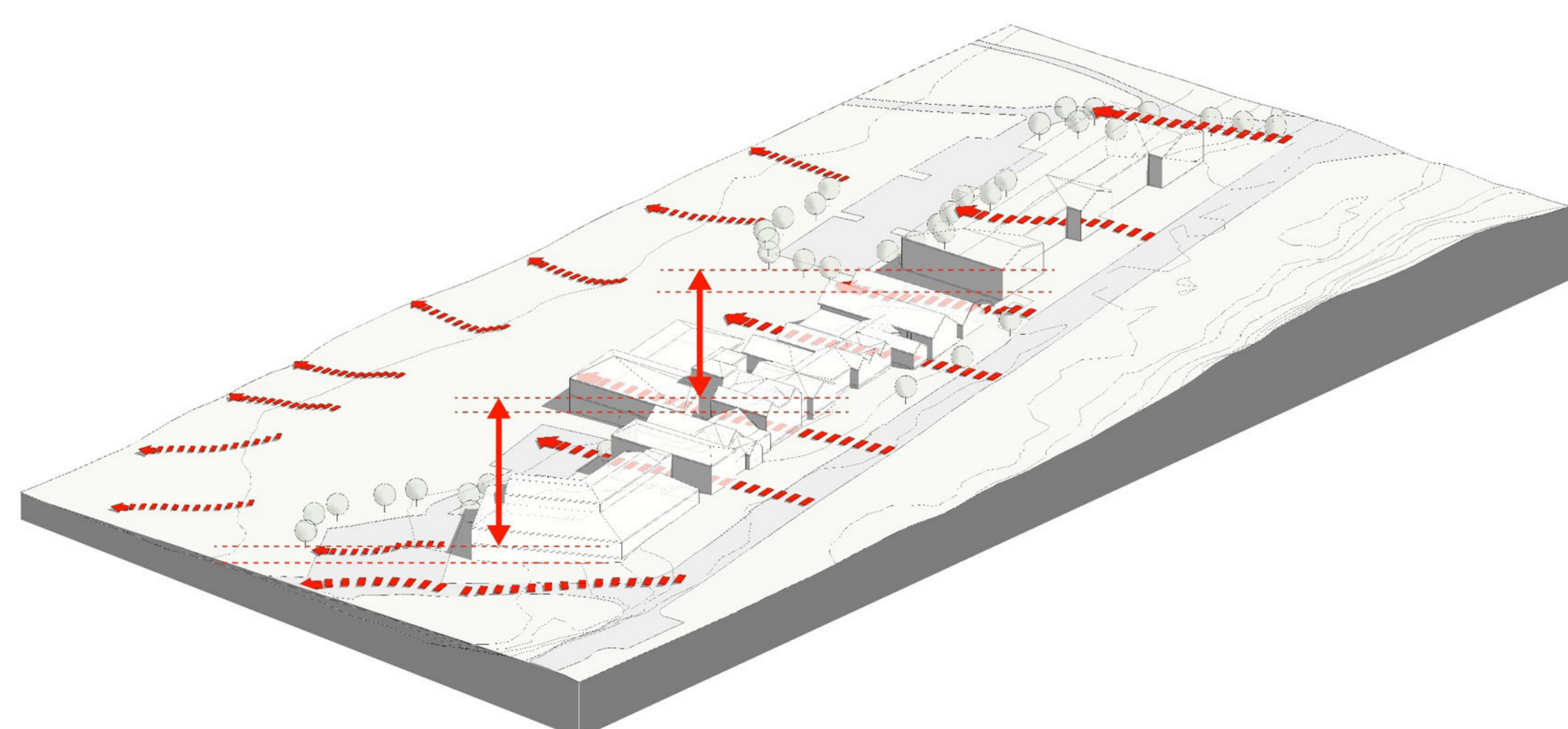


In partnership with/ Mewn partneriaeth â



Approach to Site/ agwedd at ddatblygu

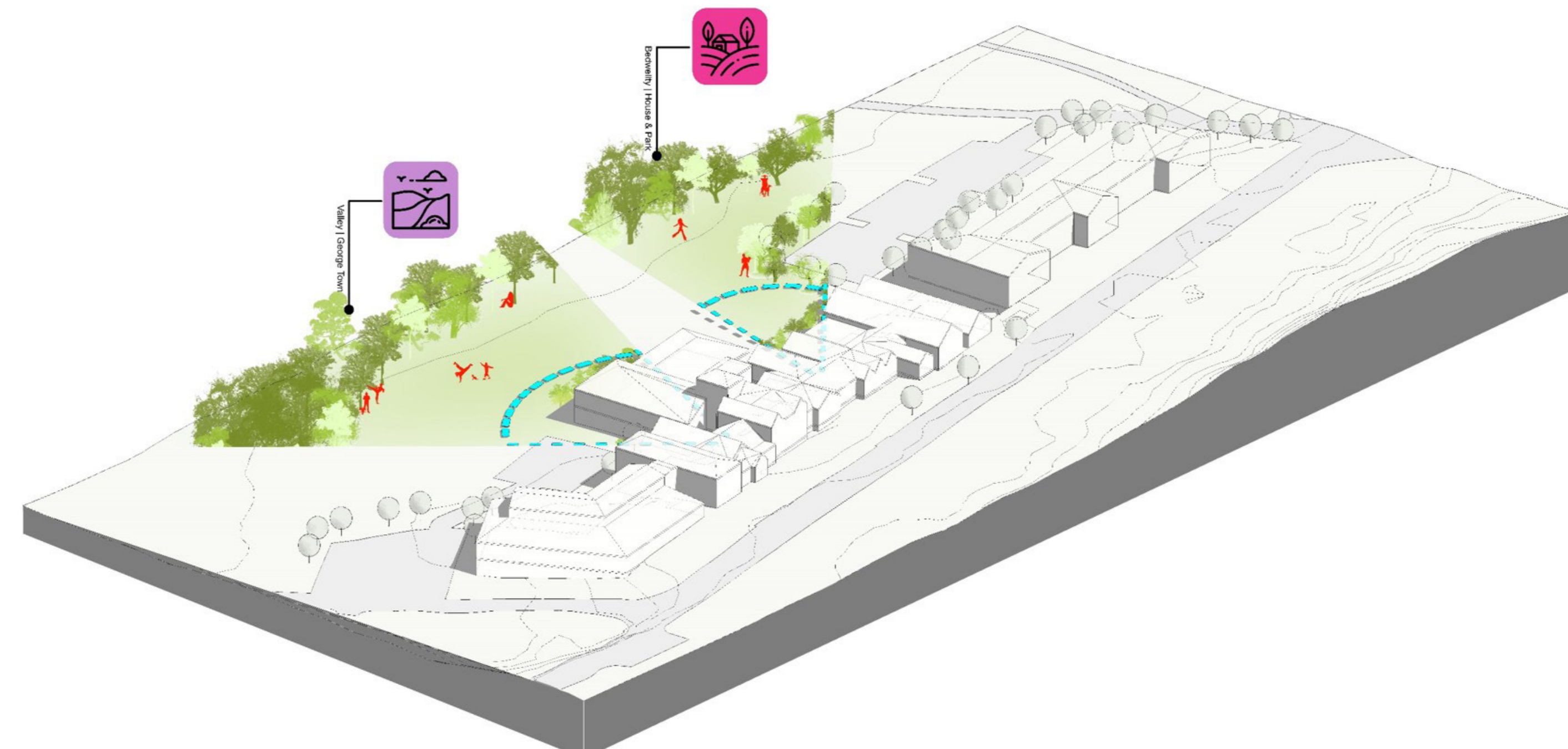
Location and Site Characteristics/ lleoliad



Located on the side of the Sirhowy Valley, the sloping site enables a split level planner with an upper and lower ground floor.



Mature trees and green space to the rear of the site offer connection opportunity to Bedwellty House and Park.



Existing boundaries and site access filter vehicular and pedestrian traffic through hard and soft landscaping features, such as the original walled frontage and perimeter planting.

- Split Level** 2 levels
- 2 Ground Floors** Upper and Lower
- 1/3 vs 2/3 Floor Area Split** Staff vs Public
- Multiple Entrance Options** Variety of Uses
- Existing Building** Defines Layout

Approach to Development/ agwedd at ddatblygu

Existing Building Strategy/ strategaeth adeiladu presennol



Historic Images of Original Hospital Circa. 1900



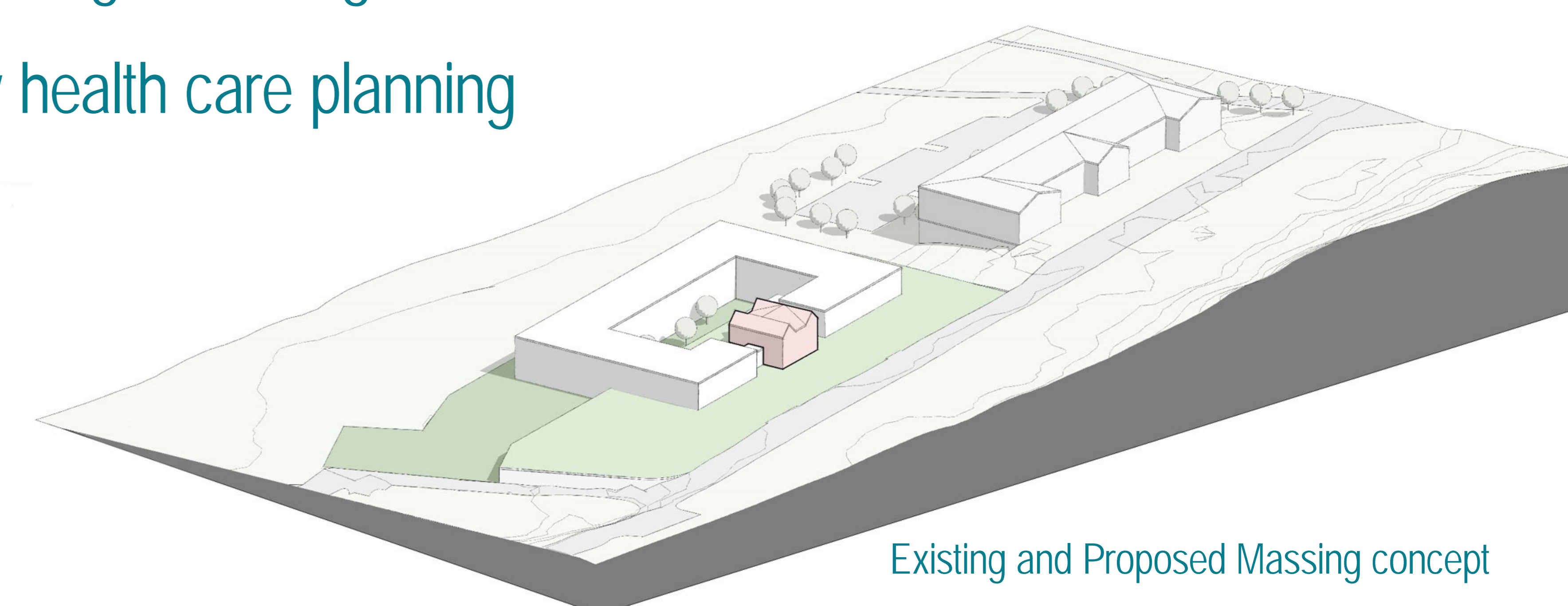
Existing building and surrounding architecture. Clockwise: Existing 'heart' building at the centre of the existing hospital; View of existing through existing opening onto Park Row; Reference building- Stables at Bedwellty House; Existing street frontage on Park Row.

Existing Building- Heart Approach

- Retention of 'heart' building
- Full new build with integration of existing building into design
- Flexibility of new build area for 21st Century health care planning



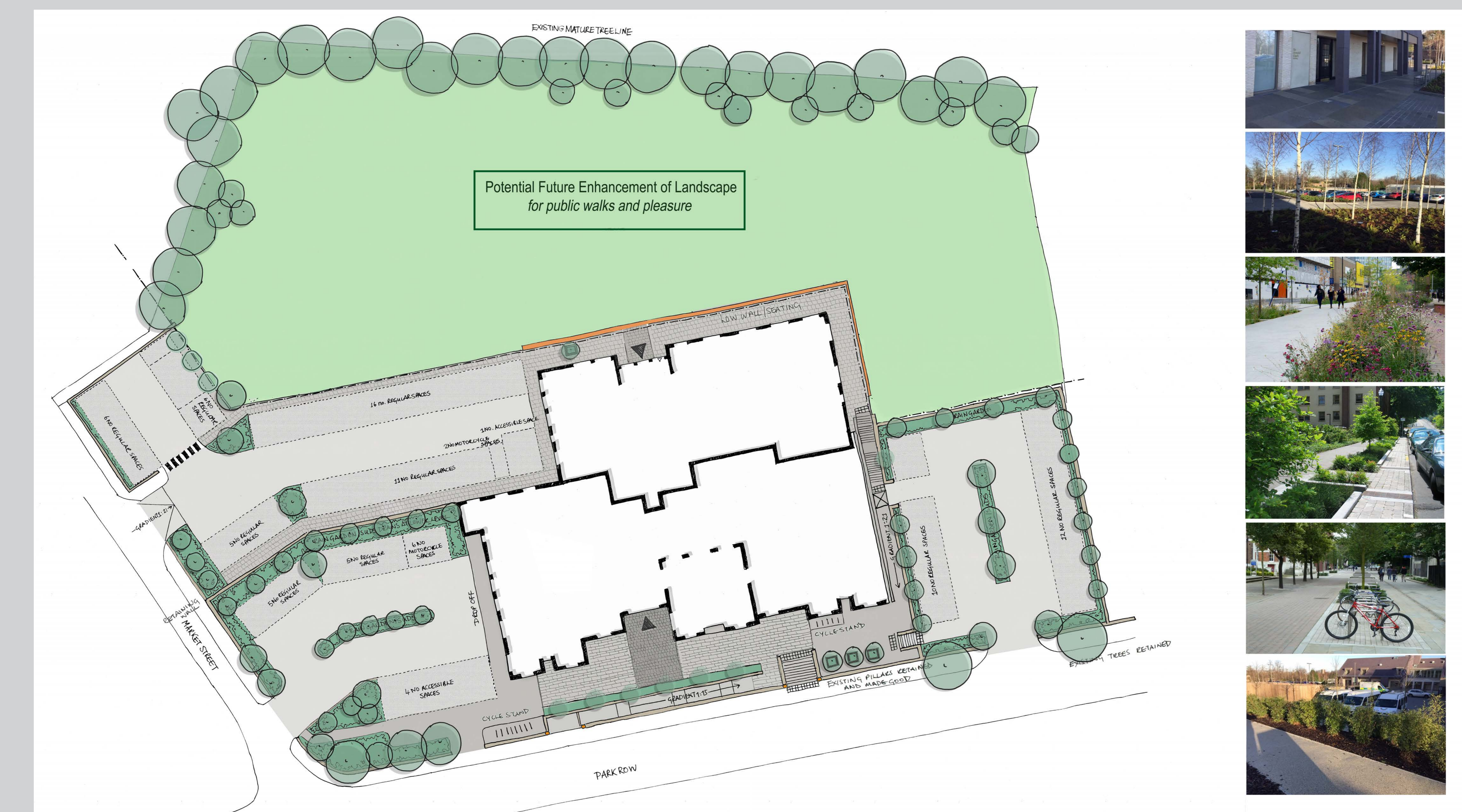
Approach to maintaining 'heart' building



Existing and Proposed Massing concept



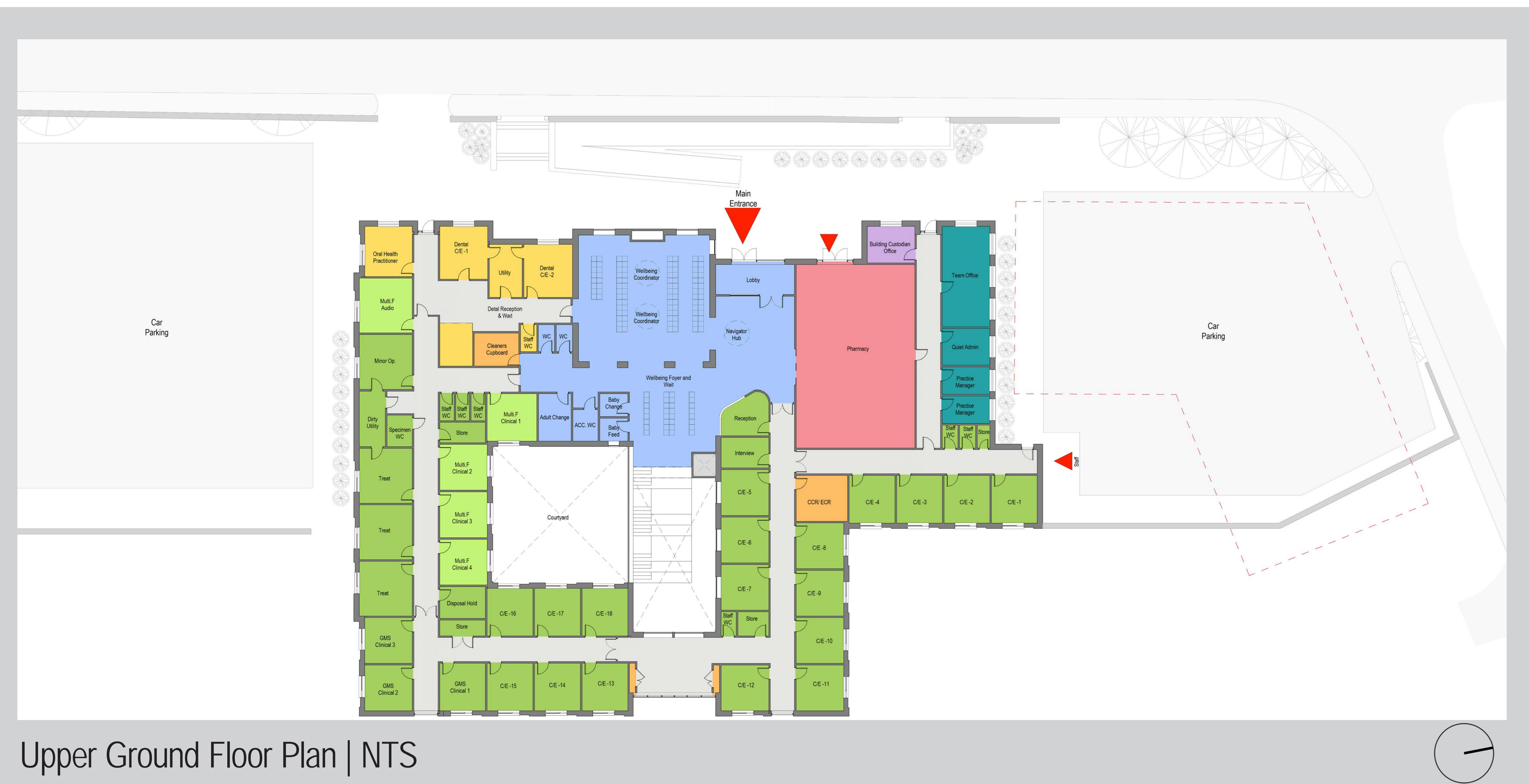
Historic Phasing of Site



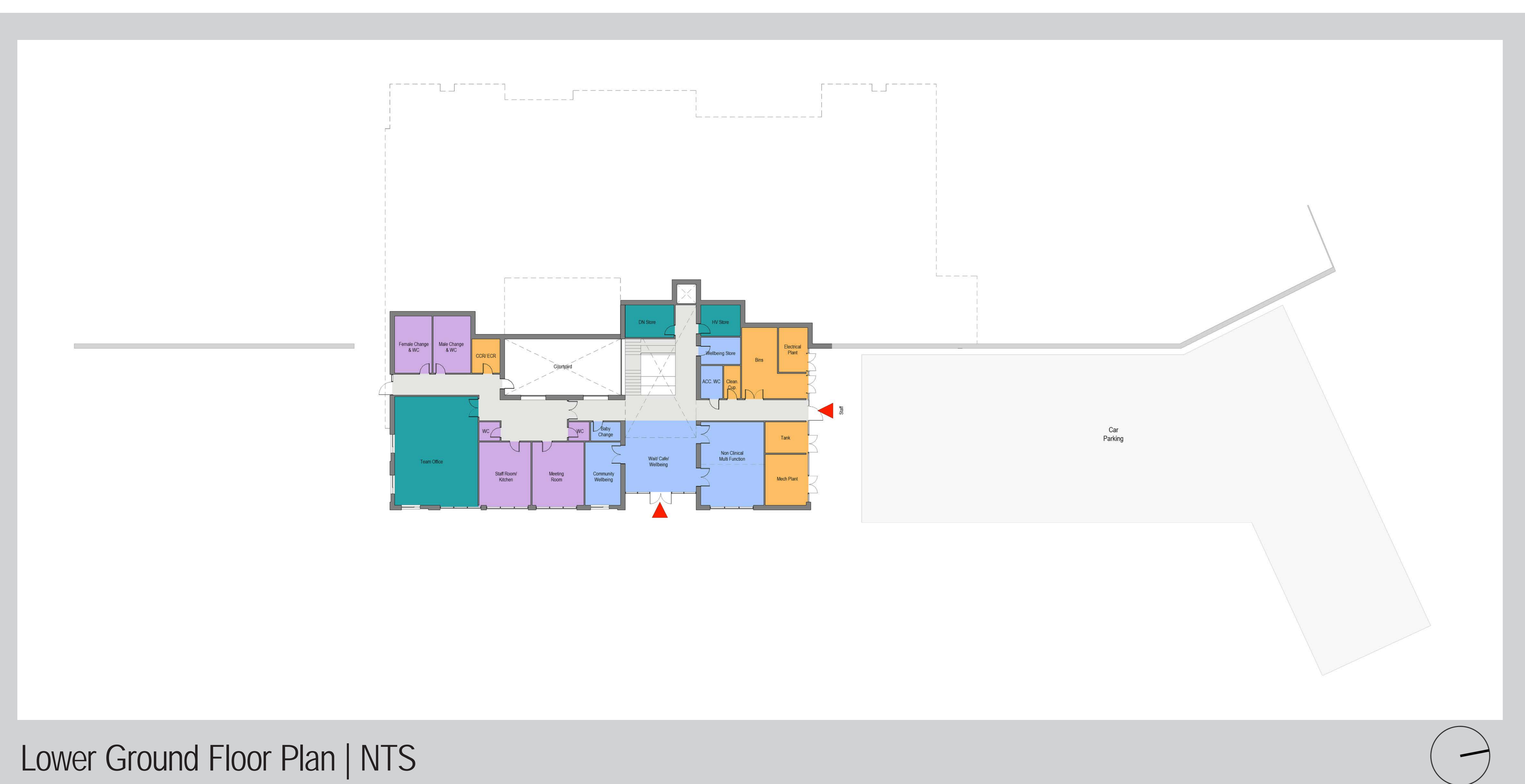
Site Landscape Sketch | NTS

Project Floor Plans/ cynllun llawr y prosiect

General Floor Arrangement/ trefniadau llawr cyffredinol



Upper Ground Floor Plan | NTS



Lower Ground Floor Plan | NTS

Conceptual Elevations/ edrychiadau cysyniadol



South Elevation

North Elevation

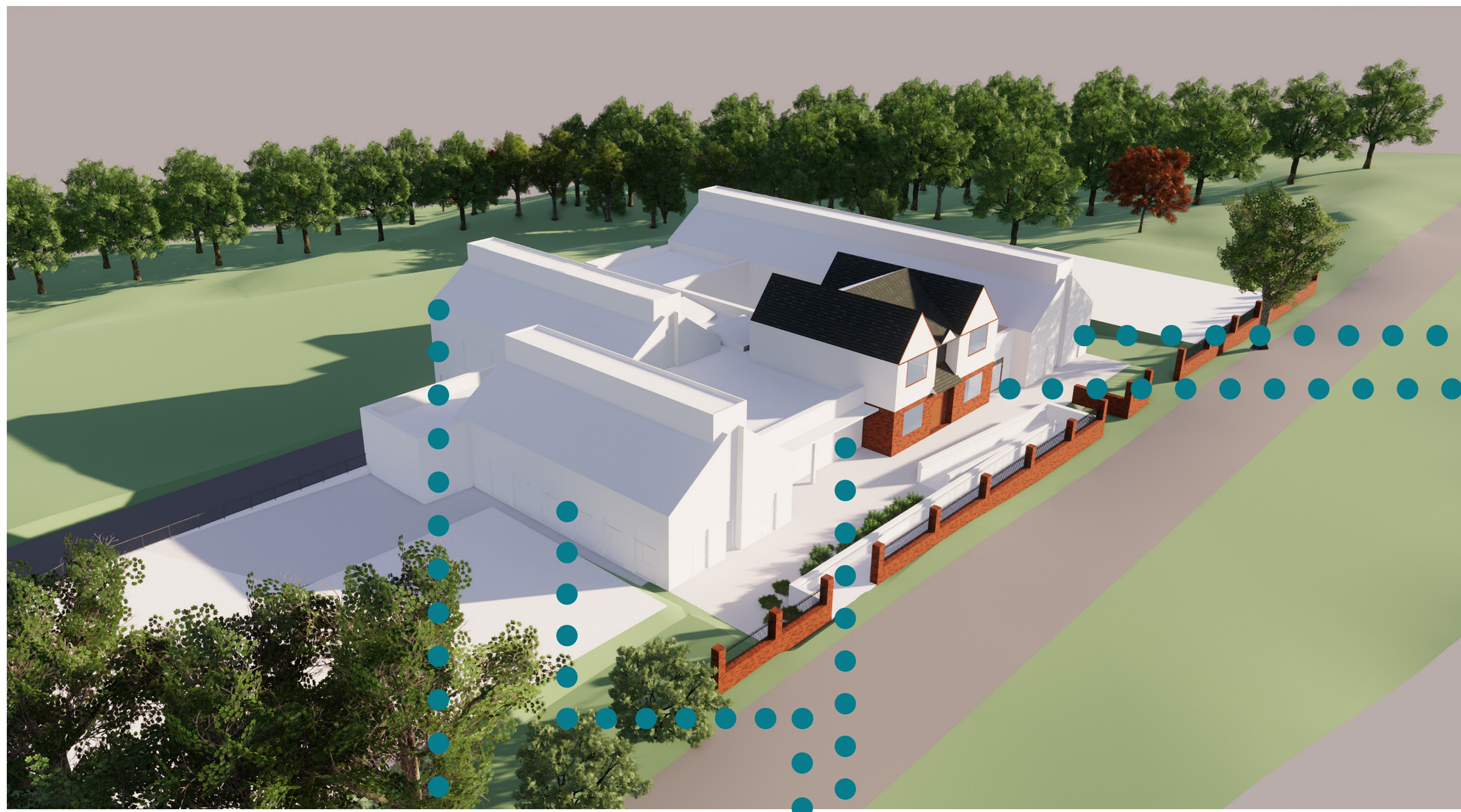
East Elevation

West Elevation

Massing and Materials/ tyllino a deunyddiau

Mood Board and Conceptual Images/ delweddau bwrdd hwyl a chysniadol

BUILDING MASSING



Brick detailing and openable window systems



Contemporary slate roof



Regular deep window reveals and locations



Metal/ darker cladding against lighter materials



Conceptual Visualization



Have Your Say/ dweud eich dweud

Contact and Information/ gwybodaeth a chyswllt



Contact us by Post:

Primary Care Locality Team,
Ysbyty Aneurin Bevan, Lime Avenue,
Ebbw Vale, NP23 69L



Contact us by Phone/ Ffonio:

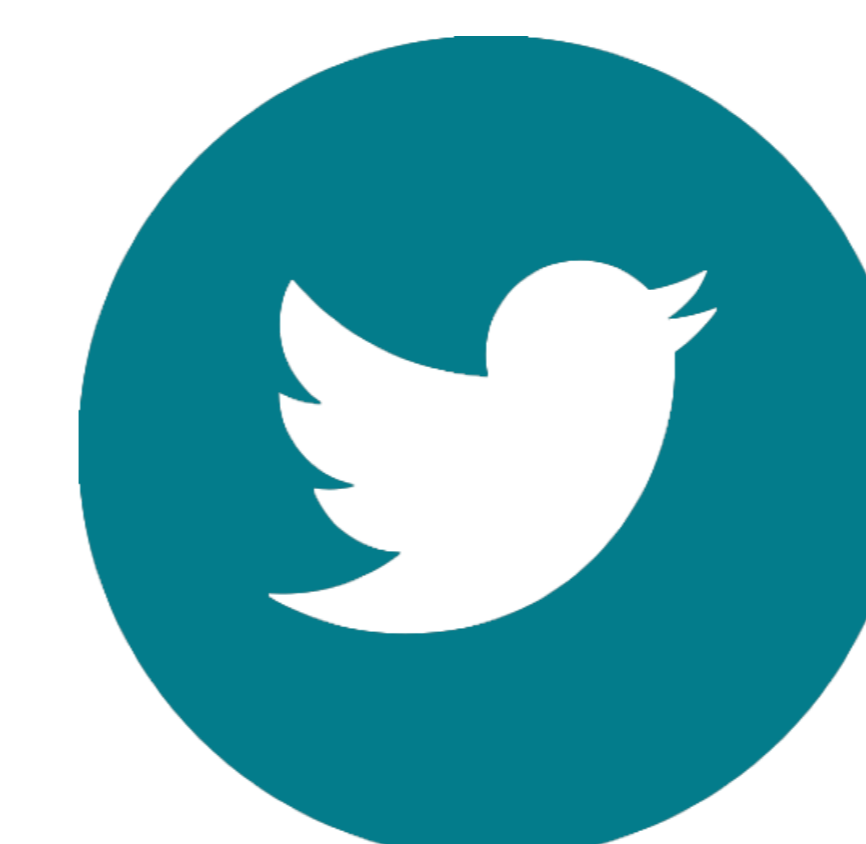
01495 363380



Contact us by Email/ E- bost:

TredHWBC.Feedback.ABB@wales.nhs.uk

Follow us/ Dilynwch ni:



In partnership with/ Mewn partneriaeth â

